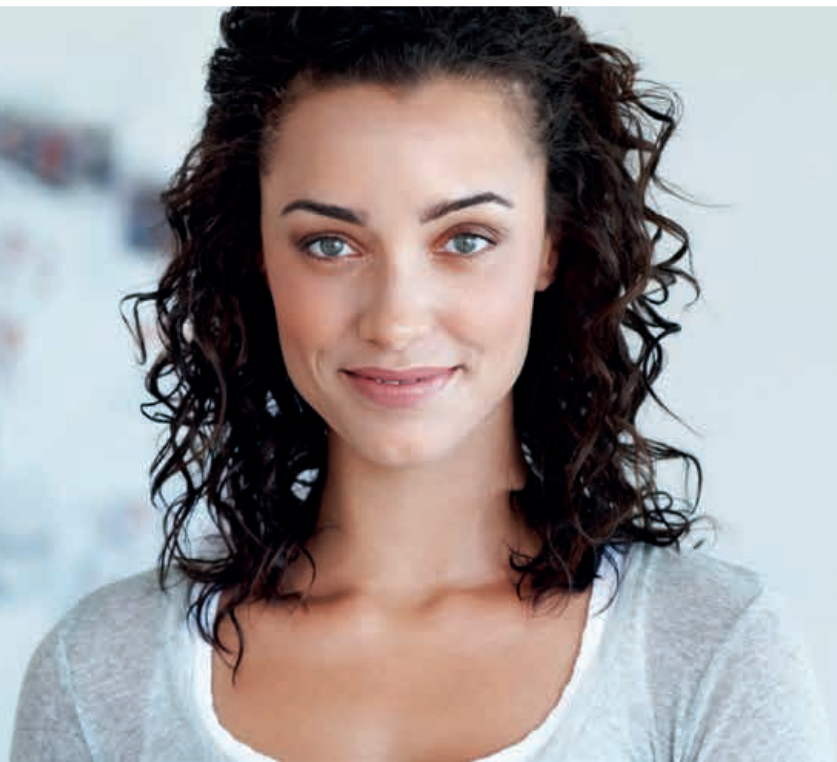


UNIVERGE® SV9100 COMMUNICATION SERVER



Smart Communications for **Small and Medium Businesses**

The **UNIVERGE® SV9100 Communications Server** is a robust, feature-rich and scalable system that is ideal for small and medium businesses. It is designed to help solve today's communications challenges and offers the ability to expand as your business grows in the future.

The SV9100 offers:

- > **Multi-carrier SIP support** – Offers greater resilience and provides more cost effective routing of calls
- > **VoIP and Traditional Voice Support** – Deploy a pure IP solution or any combination of IP and traditional circuit-switched technology with a single SV9100 system
- > **Application Integration** – Embedded applications are easily accessed through simple license activation
- > **Scalability** – As a business's communication needs grow with the company
- > **Stackable Architecture** – The SV9100's rack stackable chassis supports server functions, media gateways and media converters through a single unit



Easy migration from the SV8100

- > Investment protection
- > More features and improved functionality
- > Enhanced Unified Communications (UC) choices
- > High capacity - almost double the ports of the SV8100

NEC UNIVERGE® SV9100 Communication Server



Technical Data

Chassis	9.5"			19"			
Number of SV9100s	1	1	2	3	4	w/ NetLink	
Outside Lines	IP Lines						
	• IP Trunks (SIP)* 400*						
	Analogue Trunks						
	• Analogue Trunks (COT)	16	40	88	136	184	400
	• PRI Channels	30	90	180	180	180	400
• BRI Channels	16	40	88	136	184	400	
Terminals	IP Terminals						
	• UNIVERGE DT800 Series 896**						
	• SP310 Soft Phone 256**						
	• SIP DECT terminals 896						
	Digital terminals (TDM)						
	• UNIVERGE DT300 Series	32	80	176	272	368	896
	Analogue terminals						
	• SLT (-24V)	32	80	176	272	368	896
	• SLT (-48V)	3	20	44	68	92	896
	Applications**	• IP Gateway channels 256					
• IP Gateway channels with sRTP 256							
Embedded Applications							
<i>Voicemail</i>							
• VM InMail		16 channel; 12/115 hours of storage; 896 Mailboxes (896 subscribers, 32 groups, 32 call routing mailboxes)					
• VRS channels		16 channel					
<i>InACD</i> (896 Agents, 64 ACD Groups)							
In-Skin Applications							
• Gigabit POE switch		8 ports per blade					
• Internal router		4 port managed Ethernet switch with VLAN Support					
Networking							
• NetLink networking #		50 systems					
• FeatureNet (AspireNet)	50 systems						
• K-CCIS networking	50 systems						
Physical characteristics	• SV9100 chassis dimensions	115 x 220 x 369 mm (hxwxd)		88 x 430 x 390 mm (hxwxd)			
	• Empty chassis weight	2.15 Kg	6.35 Kg; Average weight of cards 275 g (maximum 6 cards in chassis)				
	• SV9100 Chassis Power Rating	Input 100V/120V/220V/230-240V - 2.43A/2.19A/1.19A/1.15A 50/60Hz					
Power consumption							
Compliance	The SV9100 Communications Server carries a CE mark and complies with:						
	• EMC	EN55022 Emission, EN55024 Immunity, EN61000 Powering					
	• Safety	EN60950-1					
	• Transmission and signalling	TBR3, TBR4, ES203-021, TBR8, TBR38					

* Maximum number of simultaneous calls is limited by the Voice over IP Resources (IP Pad Channels) available
 **Maximum number based on peer to peer, maximum independent of chassis configuration

For further information please contact NEC EMEA or:

EMEA (Europe, Middle East, Africa)
 NEC Enterprise Solutions
 www.nec-enterprise.com